



Cargo

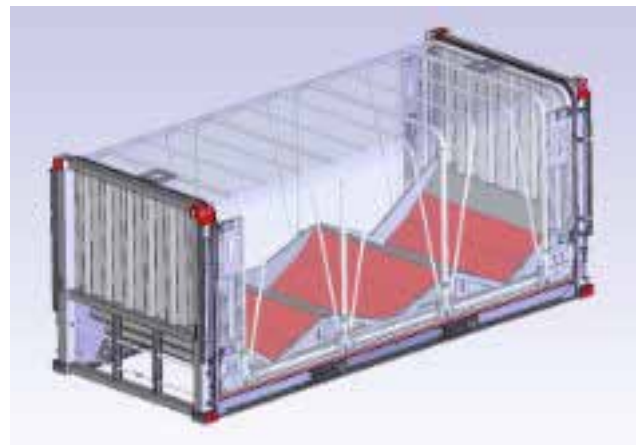
Coil Unit



DB Cargo | Innovative | andreas.phlorenz@dbcargo.com | 0493322022

Features

- Easily movable sheet with **non-woven anti-condensation membrane**
- Snow and moisture protection through **rubber lip, brush and drip rail**
- Coils **secured in cradles**
- **Mechanism for fixing sheet in position** and **gratings** to maximise occupational safety
- **Forklift pockets** and **container corner fittings** for a wide range of handling options



Dimensions of coil cradle

Mulde	1	2	3
∅ Min. mm	780	780	780
∅ Max. mm	1.650	2.100	1.650
Weight [t]	17	30	17
Loading width mm	2.240	2.240	2.240

Container dimensions

Length [m]:	6.06
Length [ft.]:	20
Width [m]:	2.55
Height [m]:	2.59
Empty weight [t]:	4.5
Payload [t]:	30